

# **Connecting Coupling**

Weima Original

### **C21—Connector, Upper Barrel**

The upper joint of the pump barrel is a standard part of the rod type oil pump. The upper part is connected with the stem guide sleeve and the lower part is connected with the pump barrel or lengthened

Part No.	API No.
C21-15 (XX)	C21-15
C21-20-125 (XX)	C21-20-125
C21-20 (XX)	C21-20
C21-25 (XX)	C21-25
C21-30 (XX)	C21-30



Note:

- 1) “XX” is Material identification symbol;

### **C22—Connector, Box Plunger**

The plunger joint with internal thread is the standard part on the plunger of the oil pump. The upper part is pressed against the travelling valve seat and the lower part is connected with the plunger.

Part No.	API No.
C22-175 (XX)	C22-175
C22-225 (XX)	C22-225
C22-275 (XX)	C22-275
C22-375 (XX)	C22-375



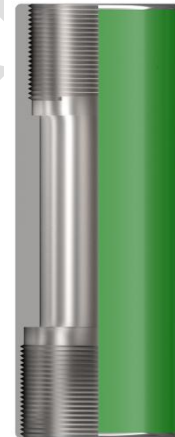
Note:

- 1) “XX” is Material identification symbol;

### **C31—Coupling, Extension**

Extended couplings are standard on rod pumps. It is connected with both ends of the pump barrel.

Part No.	API No.
C31-106-15 (XX)	C31-106-15
C31-106 (XX)	C31-106
C31-125 (XX)	C31-125
C31-150 (XX)	C31-150
C31-175 (XX)	C31-175
C31-225 (XX)	C31-225



Note:

- 1) “XX” is Material identification symbol;
- 2) Standard coupling lengths are: 6in, 12in, 18in, 24in, 36in, etc.

### **C32—Coupling, Pull Tube, Upper**

The upper collar of the pull tube is a standard part of the moving cylinder rod pump.



Part No.	API No.
C32-125 (XX)	C32-125
C32-150 (XX)	C32-150
C32-175 (XX)	C32-175
C32-200 (XX)	C32-200
C32-225 (XX)	C32-225
C32-250 (XX)	C32-250



Note:

- 1) "XX" is Material identification symbol.

### **C33—Coupling, Pull Tube, Lower**

The lower collar of the tie rod is a standard part of the moving cylinder rod pump.

Part No.	API No.
C33-125-15 (XX)	C32-125-15
C33-125 (XX)	C32-125
C33-150-20 (XX)	C32-150-20
C33-150-25 (XX)	C32-150-25
C33-175 (XX)	C32-175
C33-200 (XX)	C32-200
C33-225 (XX)	C32-225



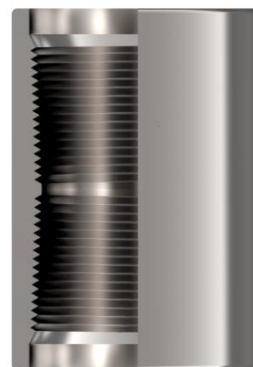
Note:

- 1) "XX" is Material identification symbol.

### C34—Coupling, Tubing

Tubing collar with tubing threads at both ends.

Part No.	API No.
C34-15 (XX)	C34-15
C34-20 (XX)	C34-20
C34-25 (XX)	C34-25
C34-30 (XX)	C34-30
C34-40 (XX)	C34-40



Note:

- 1) “XX” is Material identification symbol.

### C35—Coupling, Barrel

The pump barrel coupling is used to connect the oil pipe or add long and short sections to the pump barrel.

Part No.	API No.
C35-20 (XX)	C35-20
C35-25 (XX)	C35-25
C35-30 (XX)	C35-30
C35-40 (XX)	C35-40



Note:

- 1) “XX” is Material identification symbol.



**WEIMA**  
OIL & GAS LIFTING

**Shandong Weima Pumps Manufacturing Co., Ltd**

## 1. Pump Material for Connecting Coupling

Identification Symbol	Description	Base core hardness	Base material	Base Material Minimum Yield Strength MPa (ksi)
A1	Steel	90HRB~23HRC	UNS G10XX0	345 (50)
A2	Low alloy steel	90HRB~23HRC	UNS G41XX0	345 (50)
A3	Low alloy steel	90HRB~23HRC	UNS G86XX0	345 (50)
A4	Ni/Cu Alloy Steel	83HRB~23HRC	UNS N04400	345 (50)
C5	Brass	60HRB~90HRB	UNS C46400	276 (40)
C6	Stainless steel	79HRB~23HRC	UNS S30400	241 (35)



**威马股份**  
WEIMA OIL & GAS LIFTING

Tel: 0086 531-75919863

Fax: 0086 531-78856601

Website: [www.sdweima.com](http://www.sdweima.com)

Email: [weima@sdweima.com](mailto:weima@sdweima.com)